



RFID Portfolio

See it all. Get it all.



RFID Simplicity Starts Here.

You're under pressure to work at a brisker pace. Your online shoppers expect orders to be stocked in your store and quickly found by your staff. Patient care requires instant location of medication, and flawless fulfillment depends on real-time inventory tracking. How can you satisfy customers and speed up processes? Radio Frequency ID (RFID) technology revs up operations, by automatically locating your tagged objects at greater speed, accuracy and volume than traditional methods.

But there's more to implementing RFID than you might realize. Unless properly engineered, metals and liquids can play havoc with RFID. Reader and tag frequencies can collide. And tags not made for your environment can fade or fall off. So how do you find the ideal solution, without getting blindsided by extra costs and complexity?

That takes guidance from those with a big picture view—experts who have engineered every aspect of RFID, from readers to antennas, from printers to software, supplies and service for every type of industry. Count on Zebra to keep you on track. With our expertise and extensive RFID portfolio, you'll have a cohesive solution made for your particular needs. You can focus on business, instead of technology, because every component talks to one another and to your existing systems. You can keep an eye on what's on the shelf and on the move, because RFID signals won't get lost or crossed, and tags will stay put and legible.

What about integration, management and app development? You're covered. **Gain a performance edge shopping in one place and from one RFID portfolio—Zebra's.**



Relentless Performance in Any Environment.

Stop searching for inventory and assets. With Zebra RFID solutions, you will automatically know the location of business-critical items—whether you're tracking merchandise in your stores, medication in your hospitals or goods flowing in and out of your warehouses. Made for your environment, application and conditions, **Zebra RFID solutions are designed to make you more effective.**



Transportation and Logistics

Deliver non-stop service from the first mile to the last.

- Employee safety
- Fleet management
- Inventory management
- Supply chain management
- Asset tracking
- Sortation/handling/ service quality
- Mobile dispatch
- Terminal operations
- Port & yard management



Manufacturing

Increase productivity from the plant floor to the front door.

- Materials management
- Item-level inventory visibility
- Work-in-process (WIP)
- Vehicle and yard management
- Asset utilization/tracking and analysis
- Shipment validation
- Supply chain tracking/ management
- DSD Route Accounting/ Field service
- Fulfillment/replenishment
- Tool tracking
- Theft prevention



Healthcare

Strengthen patient safety from admissions to discharge.

- Equipment/asset tracking
- Item level inventory visibility
- Supply chain management
- Patient/people monitoring
- Staff utilization
- Document/data file management
- IT asset tracking
- Specimen tracking



Retail and Hospitality

Give customers an experience that keeps them coming back.

- Item level inventory Management
- Store replenishment
- Omni-channel fulfillment
- Point of sale
- Interactive fitting rooms
- Loss prevention
- Self service kiosks
- Brand authentication



Zebra Handheld and Hands-Free RFID Readers

Out of sight is now never out of reach.

Track, trace and tally assets in real time. Choose from sleek handhelds, hands-free devices, rugged form factors and RFID sleds. Below are just a few ways to easily and accurately handle RFID.



MC3390R RFID Reader

Zero in on distant items with zero effort

Accurately read tags up to 60 feet away—200% farther than the next leading competitor. Ease migration with the intuitiveness of Android™ and the flexibility of keypads. With Zebra's signature rugged design, the MC3390R is built for semi-industrial environments.



RFD2000 Sled RFID Reader

Turn Zebra's TC20 into an RFID reader

Add UHF RFID tag reading, writing and locating capabilities to the RFID-ready version of Zebra's TC20 touch mobile computer. Compact and lightweight, the sled delivers all day comfort and sleek styling for design-conscious stores.



DS9908R RFID / 1D / 2D Reader

Bring RFID to your POS

Close the supply chain loop. Read RFID-tagged merchandise at the point of sale for up-to-the-minute inventory tracking. The DS9908R is a hybrid handheld / hands-free scanner that offers best-of-breed barcode scanning with RFID reading capabilities in a single platform.



MC3330R RFID Reader

Less trekking, more tracking

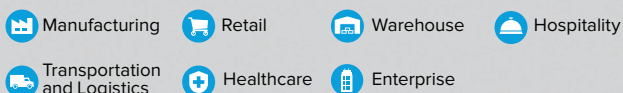
No need to walk to locate and count items. Let the data come to you. The MC3330R offers the best-in-class, mid-range RFID read performance. Plus, it combines the ease of Android with the functionality of keypads for effortless migration.



RFD8500 RFID / 1D / 2D Sled

Turn your computer into an RFID reader

Pair the Bluetooth-enabled RFD8500 Sled with Zebra's TC51, an Android or iOS smartphone or a laptop or desktop computer, and you're ready to read RFID tags. The RFD8500 is device- and OS-agnostic.



Zebra Fixed Readers, Antennas, Setup Wizard and Software

Find what you seek in RFID solutions.

Make sure the right asset is in the right place at the right time with Zebra's complete RFID portfolio—the deepest and widest in the industry.

Fixed RFID Readers

No need to sacrifice style for functionality. Our readers are built powerful, whether they have a polished exterior for customer-facing environments or a rugged exterior for tough workspaces.



FX9600 Fixed RFID Reader

Top of the line performance for high-volume rugged environments



FX7500 Fixed RFID Reader

The small interior reader, big on speed and accuracy



ST5500 RFID Transition Reader

Know what's entering and exiting your premise



RFID Array Readers

Zebra's RFID Array Readers offer advanced technology that provides visibility into the pinpoint location of all of your tagged assets, including if they are on the move, and which direction they are moving.



ATR7000 RTLS Reader

Superior locationing for maximum asset visibility

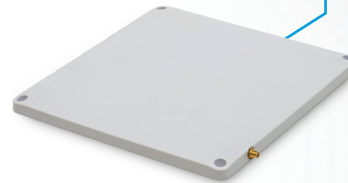


RFID Antennas

Quickly and accurately track inventory and assets. Our robust antennas offer the high performance and range needed for high traffic and precision.

AN510 RFID Antenna

Ultra-rugged and low profile for use indoors and outdoors



RFID Reader Software

You don't have to be an expert to set up and optimize Zebra RFID readers. Our tools help you every step of the way—easily configure and deploy your RFID readers with no need for complication or delays.

RFID Setup Wizard 123RFID

Make RFID deployments as easy as 1, 2, 3

Our free, intuitive wizard presents easy-to-understand options in drop-down menus, radio buttons and sliders. Use built-in help and how-to-videos to find answers to your questions.



Software Utility FX Connect

Lower IT burden, faster RFID implementation

Quickly and easily configure and deploy FX Series fixed RFID readers without the need for API's or application development.



Zebra RFID Printer Encoders

Accurate and scalable RFID encoding.

Your solution depends on reliable data. Zebra offers the industry's widest range of printers that accurately encode RFID labels, tags and cards where and when you need them. Build your solution on RFID data you can trust.



ZT600, ZT400 Industrial Printers and ZE500 Print Engine

Intelligent and industrial brawn

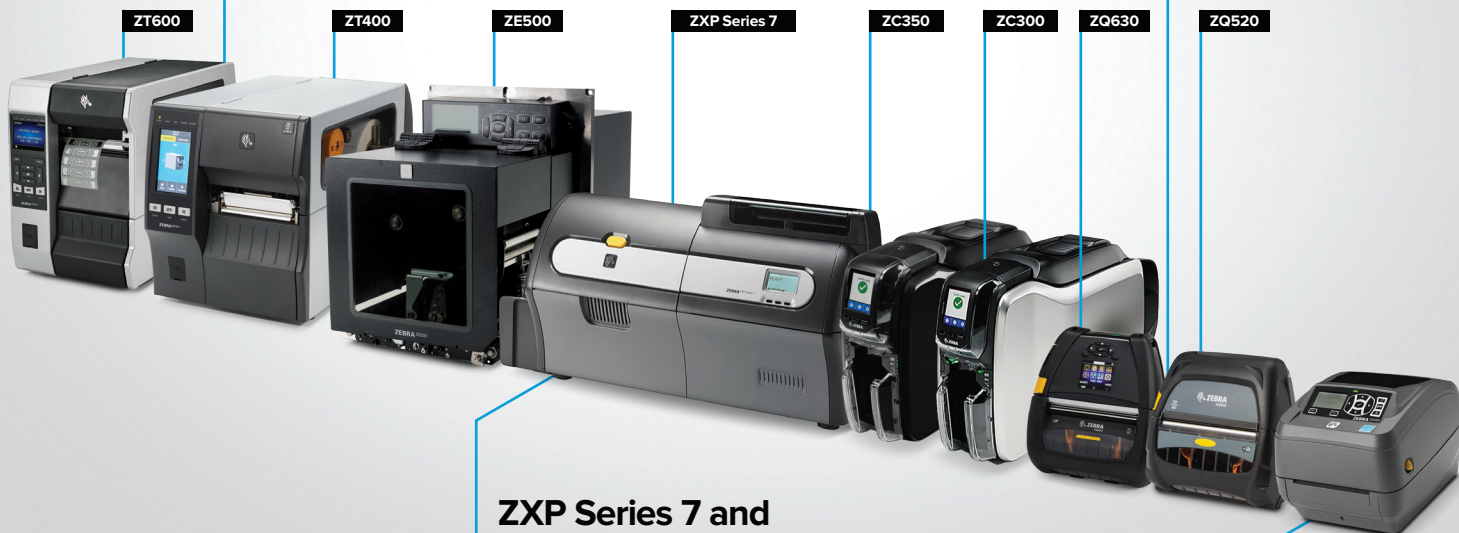
These printers and innovative OEM print engine keep your operations running 24/7 in the harshest environments and the most demanding RFID applications.



ZQ630 and ZQ520 Mobile Printers

For the rough and tumble world

Our premium mobile printers are built to withstand repeated drops, spills and shocks. Yet, are friendly to workers, and easy for IT to integrate and manage.



ZXP Series 7 and ZC300 Series Card Printers

Capabilities with credentials

Whether you need high performance or compact with ground-breaking simplicity, Zebra UHF card printers deliver.



ZD500R Desktop Printer

Bring RFID printing to your desktop

Compact and easy to use, this printer delivers intelligence and advanced features for convenient, simple operation.



Zebra Certified Supplies

The Perfect Match for Your RFID Printer.

Using inlays from leading manufacturers, as well as our own Zebra-branded inlays, Zebra offers 30+ labels in stock. We can also create a custom solution for you—with just about any thermal material and inlay to meet the requirements of your unique application. Designed and tested with Zebra printers and RFID readers, our Certified Supplies ensure high performance.

General purpose

- Paper and synthetic labels, designed for use with standard applications
- Best for non-metallic surfaces, plastics or corrugate
- ZBR2000 Zebra-branded inlay for longer read ranges and faster tag acquisition

Advanced

- Paper and synthetic labels that offer a higher level of readability performance than our general purpose labels
- ZBR4000 Zebra-branded advanced UHF RFID inlay offers a higher level of performance than general purpose inlays

Specialty

- Designed for asset tagging on metal surfaces or for liquid-filled containers

Exceptionally consistent. Consistently exceptional.

One of the largest offerings of in-stock and ready-to-ship RFID labels



Outstanding performance

The latest chip technology and proprietary inlays provide enhanced performance



Reliable consistency

The same label material used from order to order results in consistent print and adhesive performance every time



RFID solution expertise

As the developer of RFID readers and printers, Zebra can recommend the labeling solution that optimizes the performance of each RFID solution



Zebra-branded Inlays

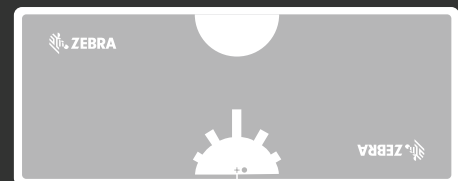
Zebra Inlays

- Auburn University ARC Certified
- Industry leading performance
- Pre-tested with Zebra printers and readers



ZBR2000 General Purpose Inlay

- Ultra-high sensitivity: read range up to 17 meters in free space (Up to 90% longer than similar general-purpose inlays)
- Economical choice for 4-inch-wide labeling applications



ZBR4000 - Advanced Inlay

- Ultra-high sensitivity: read range up to 20 meters in free space
- Optimized to be read from nearly any angle
- Excellent performance when placed on or near challenging materials (i.e. pallets, freight)
- Best in class read accuracy with Zebra ATR7000

Zebra Signature Services

Data insights from the technologies at the edge of your network can open up a world of new commercial opportunities. But without the right skills or resources, you could miss out on the full benefits. **Zebra Signature Services accelerate your ability to unlock intelligence** from your data, so you can run your business more productively.

A Signature Service that ensures RFID delivers the improvements you expect in business performance.

- Reduces the risk that RFID projects fail
- Delivers anticipated performance improvement
- Improves speed, cost, and probability of success

Zebra OneCare® Support Services

Constant, peak performance. That's the upside of protecting your investment with our support services. You eliminate the unexpected disruptions and unbudgeted repair expenses. Whether you need comprehensive coverage, assistance with technical issues, visibility into your contracts and operational reports or on-site support, there's a Zebra OneCare Support Service that's right for you.*

Choose from three service levels:

Zebra OneCare Essential	Zebra OneCare Select	Zebra OneCare Premier**
<ul style="list-style-type: none">• Comprehensive repair services• Software support• 8x5 technical support (plus 24x7 online support)• 3-day repair turnaround service• Device Diagnostics** and Support Dashboard***	<ul style="list-style-type: none">• All the features of Essential Service• Next business day advanced device replacement• Commissioning services (app loading and configuration management)• 24x7 helpdesk support	<ul style="list-style-type: none">• All the features of Essential and Select Services• Operational Visibility Service• Software release management• Service delivery manager• Managed device service desk

Zebra Visibility Services

You could be caught off-guard by device downtime and battery failures when you don't have visibility into your device data to tell you how your devices are performing, so you can decide what next steps you can take to improve your operations. Without clear, comprehensive data on the mobile devices that run your business, you're in the dark trying to compensate with manual tracking, excessive inventory and repair.

Zebra's VisibilityIQ™ gives you the data-driven, actionable insight when and how you need it. Get a clear view into how your devices are performing and know what next steps can push up productivity and drive down costs.

VisibilityIQ™ Foresight

Go beyond an MDM and view full operational aspects of your devices from a single dashboard view.

VisibilityIQ™ DNA

Peer inside your hardware for answers to key DNA efficiency.

VisibilityIQ™ OneCare®

View status of device repairs, technical issues, contracts, case reports and software, and LifeGuard™ security status visibility.****

* Service availability, Service feature and or repair turnaround time may differ by country. ** Zebra Mobile Computers only *** Zebra Mobile Computers and Scanners only **** VisibilityIQ OneCare available in North America for mobile computers and scanners only

Global Services

Maximize uptime and ROI.

Whether it's understanding operational utilization, maximizing predictability and uptime or simply unlocking the data of your edge devices, Zebra's portfolio of services provides **expertise every step of the way.**

Gain edge-to-edge visibility with wall-to-wall choices, visit www.zebra.com/RFID



Avalon Integration, Inc.
3 Werner Way
Lebanon, NJ 08833
(908) 252-1963